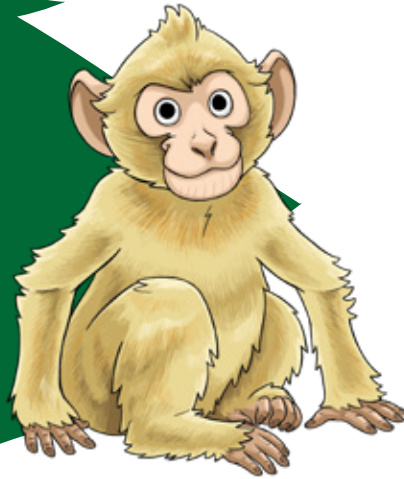


HOW OLD IS THAT MONKEY?



At Monkey Forest, our Barbary macaques live in large groups comprising individuals of all ages.

Here we'll look at how to tell the age of a monkey using a few characteristics:



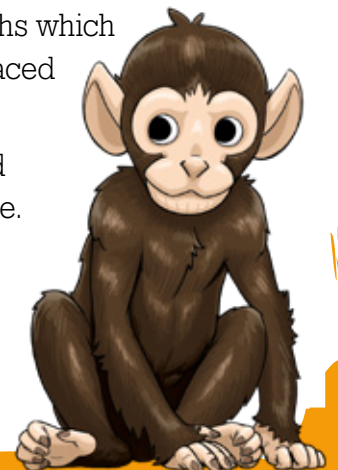
BABIES:

Babies are born in the spring and early summer with DARKER fur than the adults.

During the first month they are generally carried on the belly, after one month increasingly on the back.

They start to lose their dark fur after 1.5 months which is gradually replaced by brown fur.

They are weaned at 6 months of age.



YOUNG:

They are growing, but still smaller than the adults.

For instance, a 4-year-old monkey is bigger than a 3-year-old monkey.

They spend a lot of time playing and are very agile.



ADULTS:

(By 6 years for a female and by 8 years for a male).

They are fully grown. Adult males are large in size, they weigh around 17kg and have large canine teeth used to display to others.

Adult females are smaller in size; they weigh around 13kg and have a pronounced swelling on their bottoms.



OLD MONKEYS:

Old monkeys are easy to spot, their main characteristics are:

- they move slowly and are frail;
- they have a curved back;
- old females have black fur around the face like a beard.

Our eldest monkey in the park was 32 years old! That's over 100 in human years!

